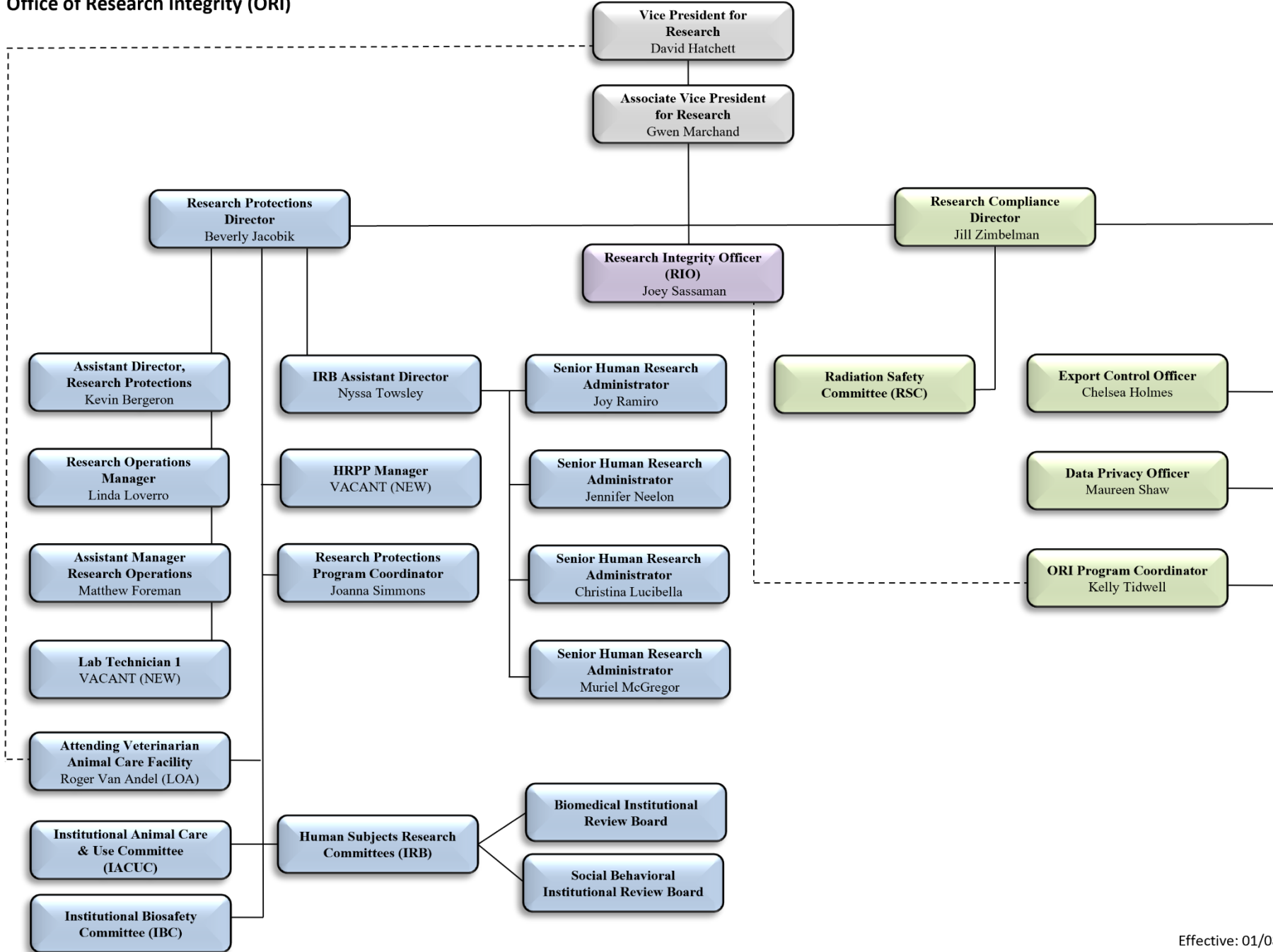


Office of Research Integrity (ORI)



Office of Research Integrity (ORI) Organizational Chart

David Hatchett, Vice President for Research

Gwen Marchand, Associate Vice President for Research

- **Research Compliance and Security**
 - Jill Zimbelman, Research Compliance Director
 - Chelsea Holmes, Export Control Officer
 - Maureen Shaw, Data Privacy Officer
 - Kelly Tidwell, ORI Program Coordinator

- **Research Integrity**
 - Joey Sassaman, Research Integrity Officer

- **Research Protections Program**
 - Beverly Jacobik, Research Protections Director
 - Joanna Simmons, Research Protections Program Coordinator

 - **Biological Research Program**
 - Roger Van Andel (LOA), Attending Veterinarian, Animal Care Facility
 - Kevin Bergeron, Assistant Director, Research Protections
 - Linda Loverro, Research Operations Manager, Animal Care Facility
 - Matthew Foreman, Assistant Manager, Research Operations, Animal Care Facility
 - VACANT, Biological Research Technician

 - **Human Subjects Research**
 - Nyssa Towsley, Assistant Director, IRB
 - Joy Ramiro, Senior Human Research Analyst
 - Jennifer Neelon, Senior Human Research Analyst
 - Christina Lucibella, Senior Human Research Analyst
 - Muriel McGregor, Senior Human Research Analyst
 - VACANT, HRPP Manager

- **Regulatory Committees**
 - Institutional Animal Care & Use Committee (IACUC)
 - Human Subjects Research Committees (IRB)

- Biomedical Institutional Review Board
- Social & Behavioral Institutional Review Board

- **Safety Committees**

- Radiation Safety Committee (RSC)
- Institutional Biosafety Committee (IBC)