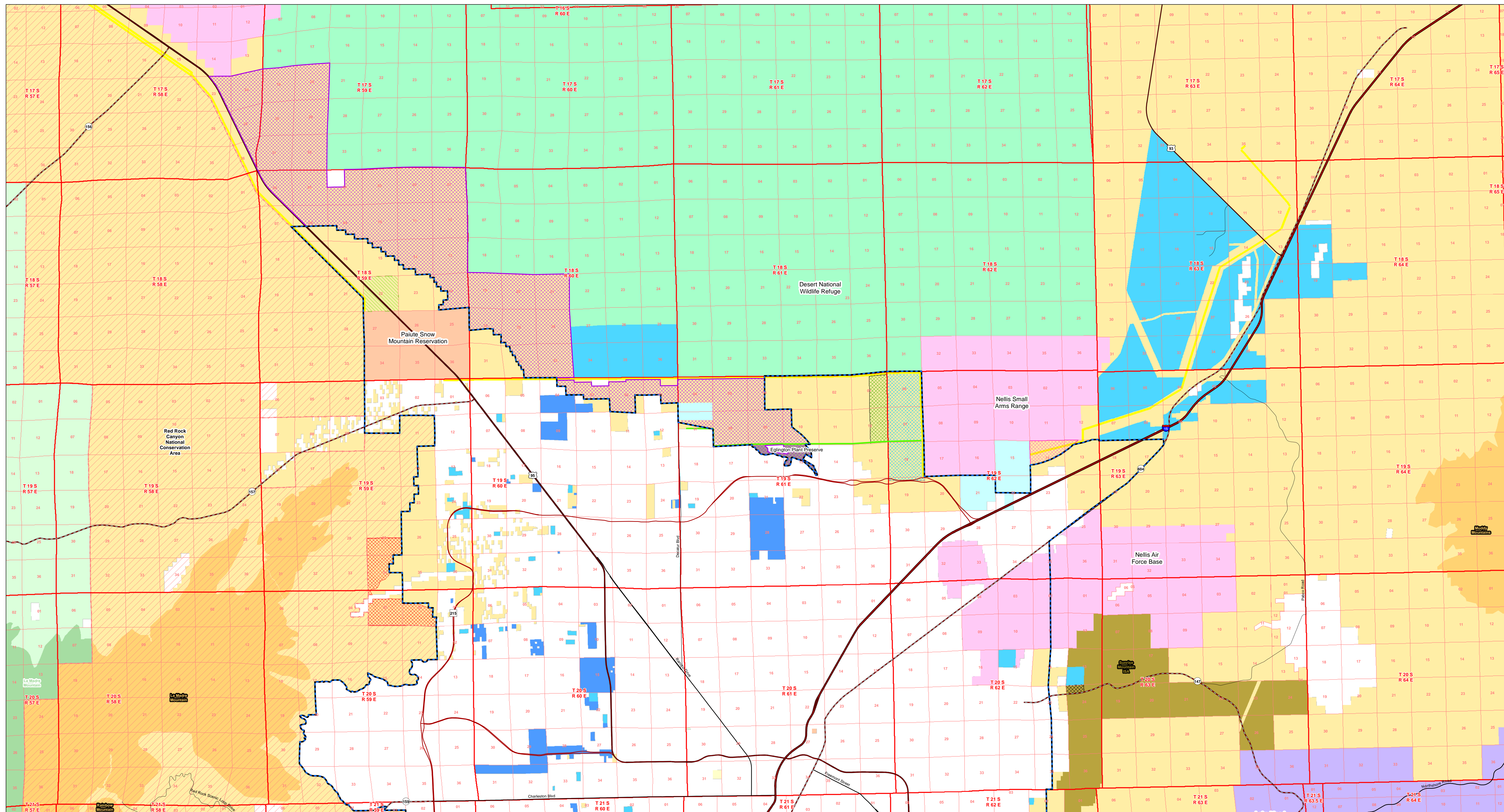


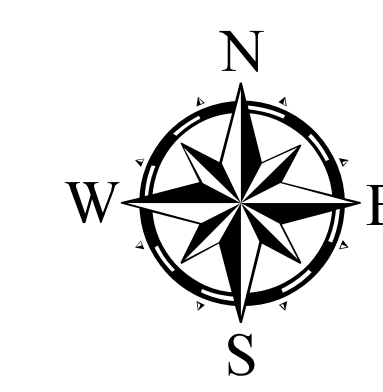
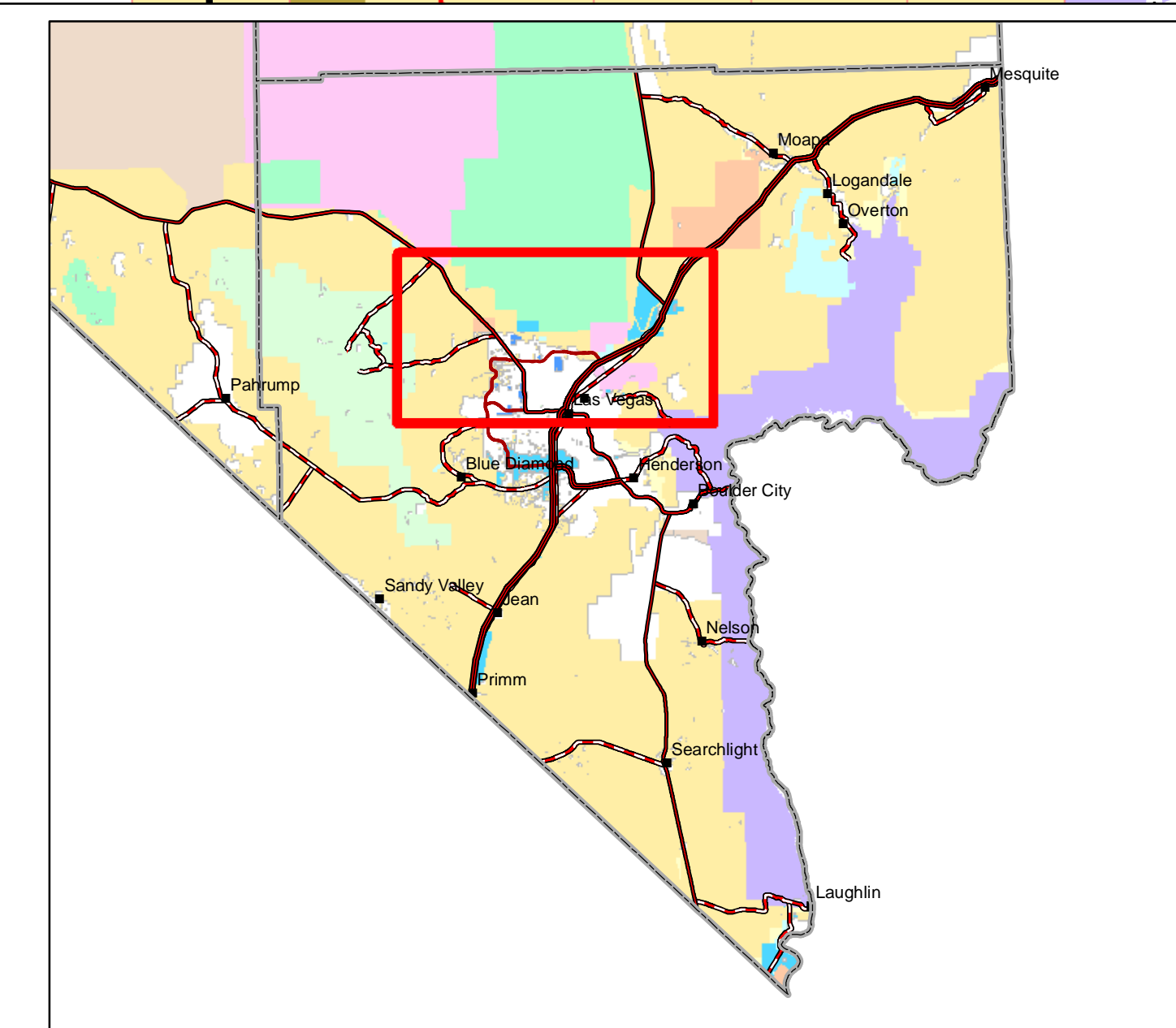
# North Las Vegas Valley Overview

This map prepared at the request of Senator Harry Reid and Senator Dean Heller  
April 30, 2013



## Legend

- |  |                                      |                           |                           |
|--|--------------------------------------|---------------------------|---------------------------|
| Tule Springs Fossil Beds National Monument | Water Conveyance Facilities Corridor | <b>Land Status</b>        | Department of Energy      |
| SNPLMA Disposal Boundary                   | Eglington Plant Preserve             | Bureau of Indian Affairs  | Fish and Wildlife Service |
| Addition to Nellis Air Force Base          | <b>Las Vegas Annex Area</b>          | Bureau of Land Management | Forest Service            |
| Las Vegas Police Shooting Range            | Las Vegas Job Creation Zone          | Bureau of Reclamation     | National Park Service     |
| North Las Vegas Job Creation Zone          | Additions to Red Rock NCA            | City of Las Vegas         | Nevada State              |
| UNLV North Campus                          | National Conservation Area           | Clark County, NV          | Private                   |
| Renewable Energy Transmission Corridor     | BLM Wilderness                       | Department of Defense     |                           |
|  | BLM Wilderness Study Area            |                           |                           |



0 1.25 2.5 5 Miles

This map intended to be plotted at 34 x 44  
1:63,360



This map was made by the Bureau of Land Management for the purpose of providing information on public lands. It is not intended to be used for any other purpose. This information may not be used for any other purpose. This product may be updated through digital means and may be updated without notification.